

McCandless Town Crier



Town of McCandless • Volume 28 • Spring 2003



30TH ANNUAL SUMMER RECREATION PROGRAM

Hey kids – don't miss the fun! Sign up for our Summer Recreation Program. Everyone who does, loves it. Play games like dodgeball or hockey or go on scavenger hunts. Enjoy cool activities like water day and water – m-e-l-o-n day. Make neat stuff like a bug car and bead jewelry. Paint and color and glue and snip and tie-dye too.

The Joint Recreation Board of McCandless, Franklin Park, Bradford Woods and Marshall has been sponsoring this program since your Mom and Dad went. And they had fun, too! Anybody who has finished grade 1 through eighth grade can sign up. Just show up at a center near you (Bradford Woods Elementary School, Ingomar Middle School, Carson Middle School, Marshall Middle School, Hosack Elementary School, Warrendale Park) and pay the \$10.00 insurance fee and jump into the action. It lasts every day from 8:45 to noon from June 17 through July 11.

EMERGENCY PREPAREDNESS

In these times, all of us have a heightened awareness of the potential for domestic terrorism. In the event of a local emergency – terroristic or otherwise – many of us will get information from radio or television. Residents not wanting to have radios on constantly may want to acquire an all hazards weather radio. This radio is programmable and can be set for just Allegheny County. The weather service has agreed to transmit emergency warnings for disasters the same way it transmits emergency weather warnings. While you can leave the radio on all the time, most people will want it silent. When an emergency announcement is transmitted, your radio will turn on, day or night, to broadcast the emergency announcement. The radio that is used by many area Emergency Coordinators is the Selectable Alert Weatheradio, available at Radio Shack™. You should also have a supply of batteries so that it will continue to work in the event of a power outage.

A general rule of thumb is that in a severe weather emergency, you should relocate to the lowest level of your home. For chemical or radiation emergencies, you need to wait for instructions because the hazard needs to be specifically identified in order to provide the most appropriate instructions.

Allegheny County has prepared a separate *Citizens Emergency Personal Protection Guide*. While too lengthy to publish in the newsletter, it is available at www.county.allegheny.pa.us.

A BURNING DESIRE



The Town receives many inquiries about open burning. Guidelines have been promulgated by the Fire Marshal's Office and are listed below:

1. No person shall conduct, or allow to be conducted, the open burning of any material, except where the Office of the Fire Marshal has issued an open burning permit to such person in accordance with this section.
2. Immediately upon the discovery of any open burning, the person responsible for the property on which the burning occurs shall immediately extinguish such burning.
3. Open burning is not permitted for the removal or the disposal of trash or accumulation of brush, trees, leaves, etc.
4. Recreational fires are allowed within the Town of McCandless only with a permit issued through the Office of the Fire Marshal.
 - a. A fire prevention permit application must be filed with the Fire Marshal's Office a minimum of 24 hours prior to the scheduled burn date. The permit must be submitted in full along with a \$25.00 permit fee.
 - b. The fire department must be notified before and after the burn event. The Northwest Regional 9-1-1 dispatch center non-emergency number is (412) 369-2200.
 - c. A minimum of one portable fire extinguisher or other approved on-site fire extinguishing agents, such as dirt, sand, a water barrel or a garden hose shall be available for immediate utilization.
 - d. A responsible person shall tend the open burning at all times.
 - e. The approved permit shall be in the possession of the applicant or authorized representative at the site of the permitted open burning, and shall be made available for inspection upon request by any fire

protection or law enforcement officer.

- f. Open burning that is or anticipated to be objectionable due to the atmospheric conditions or local conditions (dry weather) that make such fires hazardous shall be prohibited. The Fire Marshal, fire protection, or law enforcement officer is authorized to order the extinguishment by the permit holder or the fire department of open burning that creates or adds to a hazardous or objectionable situation.
 - g. Only dry, clean, untreated wood products or other clean burning fuels are to be used for recreation or cookout fires.
 - h. Only smokeless fuels, if any, may be used to start the fires.
 - i. The size of the material being burned is to be no larger than 3 ft. x 3 ft. x 3 ft. in size.
 - j. The fire must be located a minimum of 50 ft. from any structure, house, shed, barn, fence, pedestrian or recreation area, roadway or utilities.
5. Open burning shall be allowed without a permit only if for warmth of work crews provided that:
 - a. The burning is conducted in a noncombustible container no larger than a 55-gallon drum.
 - b. Only one container is used for each work site.
 - c. The outside temperature is less than forty degrees Fahrenheit (40° F).
 6. Penalty for violations:
 - a. Any person who violates any of the provisions of these sections, or fails to comply with any order issued pursuant to any section thereof, shall be guilty of a misdemeanor, and upon conviction thereof, shall be punished by a fine or by imprisonment as provided in the appropriate court for each offense. Each day that a violation continues after due notice has been served shall be deemed a separate offense.

Big-time **FIREWORKS** by Pyrotechnico



Hourly **RAFFLES**-Win Prizes



Community Day 2003

September 6 1-9 p.m.

FREE Children's Activities include:

Petting Zoo
Hair Braiding
Pony Rides

Great Food:

Sandwich Smorgasbord
Ribs/Wings, Pizza, Kettle
Corn, Funnel Cakes

STAT Medivac & Lifelight Helicopter Demos, Titanic Slide,
Jumpin' Bean and Jurassic Park Inflatables, Rock Climb,
Hot Air Balloon Rides

BUY A TRAFFIC SIGNAL FOR YOURSELF OR A FRIEND

ALL DAY Entertainment Featuring:

*Ziggy's Bagpipes & Drum Corps, Bruckman's School of Dance, Tang Soo Do Karate,
The North Star Kids, Michele's Dance Center*

ROCK with Titanium Hip

grand finale by

The Allegheny Brass Band

THE IMPORTANCE OF RECYCLING A CAN, BOTTLE, LEAF, ETC.

Recycling benefits the quality of life for the entire community. It reduces the need for landfill space and requires fewer of our natural resources, thereby providing more green space for all of us to enjoy. You, as an individual or a business, can choose your own level of participation, from simply recycling products already in your home, to using both sides of a piece of paper, to creating a compost pile, to buying recycled products.

The Town of McCandless has established, by law, minimum standards that should be followed by all residences in the Town. State law dictates that all commercial, institutional and municipal establishments in the Town also recycle. If your landlord or employer does not have a recycling program or a separate receptacle in which to deposit recyclable materials, or if you witness a refuse hauler throwing recyclable materials into a regular refuse vehicle, please contact the Town at (412) 364 - 0616.

Residential Recycling Requirements

All single and two-family residences in the Town are required to separate recyclable materials from general refuse for weekly curbside pick-up. The Town's contracted refuse hauler, currently Vogel Disposal Service, will provide you with a recycling bin. If your home is a new construction, you will receive this bin at no charge when you contact Vogel to establish your account. If you live in an existing house but do not have a bin, Vogel will provide one for a minimal fee.

Apartment buildings and residences with more than two dwelling units are required to provide a separate, clearly marked receptacle for recyclable materials, and to contract with a licensed hauler to remove these recyclables on a regular basis.

Recyclable materials included in the Town's residential program are:

- GLASS food and beverage containers of all colors.
- PLASTIC beverage containers and any plastic container that has the 1 or 2 symbol on it.
- TIN, ALUMINUM, and BI-METAL food and beverage cans, and empty aerosol cans not containing paint or chemicals.
- MAGAZINES and NEWSPAPERS, including all inserts in the daily and Sunday paper.
- LEAVES (no grass clippings or brush).

Items that should not be put in your curbside bin include window glass, light bulbs, ceramics, oil or chemical containers, office stationery, phone books, and junk mail.

New vacuum equipment permits **LEAVES** to be raked onto the curb and left up to three feet behind the curb for pickup. They do not have to be placed on the street unless volume is too great. In fact, where possible, they should be composted on your lot. Due to unpredictable weather, specific days for leaf pickup are not designated. Bag routes on highly trafficked streets remain intact. Leaf pickup starts October 27 and will end November 26 unless weather precipitates a one-week extension.

Business Recycling Requirements

The Municipal Waste Planning, Recycling and Waste Reduction Act of 1988 (Act 101) requires commercial, institutional and municipal establishments located in Pennsylvania's mandated municipalities to recycle high-grade office paper, corrugated paper, aluminum and leaf waste. In

addition, establishments must recycle any other materials included in the municipality's recycling ordinance or regulations, which may include glass, newsprint, plastics, and/or steel and bimetallic cans. As a mandated municipality, businesses and institutions with facilities located within the Town must implement recycling programs. All commercial, institutional and municipal establishments must source separate all the materials identified above, along with:

- High grade office paper
- Corrugated cardboard

These establishments must arrange for the collection and recycling of all designated materials.

So Why Should You Have a Recycling Program?

The most obvious reason for implementing a recycling program in your workplace is that it is the law. It is required as a provision of Act 101 and by the Town of McCandless. Because commercial, institutional and municipal establishments contribute about 50% of the municipal waste stream, they must be a part of our waste management program. There are, however, very sound reasons for recycling at work. Waste reduction and recycling are environmentally responsible and usually cost effective methods for reducing the waste generated in your workplace. They are environmentally responsible because they divert materials from disposal. Recycled materials are remanufactured into new products, thus saving natural resources. Most processes for manufacturing new products from recyclables require less energy, which means reduced emissions to the air and water. Waste reduction and recycling may also result in what is referred to as "avoided cost," which means a savings in costs for waste disposal. And depending on market performance, some revenue may be generated for the materials you recycle. For more detailed information about implementing a waste reduction and recycling program in your workplace, visit the Pennsylvania Department of Environmental Protection web site at www.dep.state.pa.us. In addition, the Professional Recyclers of Pennsylvania (PROP) have published "Developing a Waste Reduction and Recycling Program for Commercial, Institutional, Industrial and Municipal Establishments." To obtain a copy, contact PROP at: P.O. Box 25, Bellwood, PA 16617, or by phone at (814) 742-7777, by fax at (814) 742-8838, or by mail at prop@epix.net. You can also visit them at www.proprecycles.org.

Guidelines for Recycling

When placing glass, plastic and metal containers in your recycling bin, please make sure they are clean and all lids have been removed. Newspapers and magazines should be placed in brown paper bags, and should not be placed out if they may get wet. Once newspaper gets wet, it must be discarded.

Following these guidelines and keeping your bin free of non-recyclable materials will help to keep the cost down for products made with recycled materials.

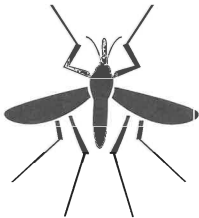
Other Recyclable Materials

There are a number of other items you may find around the house that can also be recycled, including but not limited to telephone books, tires, computers, batteries, oil, and scrap copper or metal. To find out more about recycling, please contact the Pennsylvania Department of Environmental Protection or visit their web site at www.dep.state.pa.us.

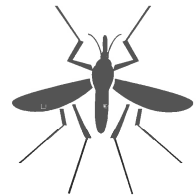
IT'S TIME TO THINK ABOUT KEEPING OUR STORM SEWERS CLEAN

Ever wonder what's under the metal grate that collects storm water in our streets? A concrete box. It collects water and sends it to a stream like many other storm sewers throughout the Town. They're not supposed to collect things like motor oil, doggie-doo, grass clippings and other items that wreck havoc on our waterways. The time is now to not contribute anything to our streams that should be disposed of properly.

Beginning March 10, 2003 a new federal requirement was imposed on McCandless and most Allegheny County municipalities to obtain a National Pollution Discharge Elimination System (NPDES) permit in order to discharge storm water to any stream. So we need your help. Our job is to compile a map of all storm outflows into streams, which is almost done. We have been comprehensively controlling public points of entry into streams. We also have to enact, in our case update, comprehensive storm water regulations and educate our citizens to proactively respect streams throughout the Town. The NPDES regulations require us to test every discharge point that flows 72 hours after a storm. We were supposed to have been taking care of our watercourses; now we have to.



STILL WATERS CAUSE PROBLEMS



West Nile Virus, borne by mosquitoes, has made incursions into western Pennsylvania. The obvious breeding ground of mosquitoes is stagnant water. Decorative water should move. Items such as pool covers, tires, buckets, etc. innocuously serve as ideal homes for mosquito larvae to thrive. Eliminate these sources which sustain mosquito growth and the spread of disease. For more info click onto the Allegheny County Health Department website at www.county.allegheny.pa.us/achd/westnile.asp or the Center for Disease Control website at www.cdc.gov/ncidod/dvbid/westnile/index.htm.

2003 PAVING PROGRAM

The warm spring weather with its blossoming trees and flowers also reveals the damage brought about by the subfreezing temperatures of this past winter to the Town roads. Each spring the Town's Public Works Superintendent Mark Sabina, Town Manager Toby Cordek and Public Works Committee Chairman, Councilman Aufman, tour the Town roads to inspect the damage brought about by the harsh winter and compare it to our master Road Improvement Plan. The list of roads to be resurfaced or reconstructed is finalized, bid specifications updated, and the contract bid. The lowest responsible bidder for this year's paving program is Russell Standard Corporation from a total of seven bids received. Roads included in this year's program, scheduled for completion by September 30, are as follows:

<u>STREET NAME</u>	<u>FROM</u>	<u>TO</u>
Albemarle Drive	Stuyvesant	Center Oak
Allante' Court	Turnaround	Olde Villa
Allison Avenue	Coyne	Menold
Amber Court	Turnaround	Turnaround
Blaze Court	Candle Ridge	Turnaround(s)
Brilikim Drive	Concord	Turnaround
Broad Hill Drive	Town/Franklin Park line	Turnaround
Broad Meadow Drive	Fassinger	Broad Hill
Brooks Road	Dead End	Highview
Calais Drive	Sloop	Turnaround
Candle Ridge Drive	Blaze	Linden
Center Oak Drive	Albemarle	Saratoga
Collington Square	Sample	Turnaround
Coyne Avenue	Ferguson	Allison
Eastview Road	Sample	Sample
Harvest Manor Drive	Broad Meadow Drive	Broad Meadow Drive
Highview Road	Pine Creek Road	Turnaround
Ingomar Heights Road	Highland Road	Town/Franklin Park line
Linden Road	Amber Court	Plan Line
Memorial Drive	Perry Hwy. (Route 19)	Perry Hwy. (Route 19)
Menold Drive	Wallace Road	Post Road
Moreland Road	Old Perry Hwy.	Turnaround
Olde Villa Drive	Babcock Boulevard	Olde Villa Drive
Pine Heights Place	Pine Line Drive	Turnaround
Pine Line Drive	Harmony Drive	Willoughby Road
Post Road	Ferguson Road	Turnaround
Reichold Road Ext.	Grubbs Road	Gass Road
Wallace Road	Ferguson Road	Hampton Town line
Wendy View Drive	Peebles Road	Turnaround

THE DUNCAN AVENUE-McKNIGHT ROAD INTERCONNECT

Under the improvement program created through a transportation partnership with the Pennsylvania Department of Transportation (PennDOT), the extension of Duncan Avenue to McKnight Road will soon be completed. The Town is now receiving bids to undertake the necessary grading work this summer. Paving is scheduled to be performed next spring. The actual opening of Duncan Avenue onto McKnight Road will occur in conjunction with PennDOT finishing the widening of McKnight Road and the signalization of its new intersection with Duncan Avenue in 2004. This will conclude over twelve years of regular planning, design and acquisition of land to enable this interconnect to be made as intended under our comprehensive plan.

COMMUNITY DAY 2003

YOU WON'T WANT TO MISS IT!

SEE INSIDE FOR DETAILS

Address Service Requested

TOWN CRIER
TOWN OF McCANDLESS
9955 Grubbs Road
Wexford, PA 15090-9645

PRESORTED
STANDARD
U.S. POSTAGE PAID
Pittsburgh, PA
Permit No. 2599