

**STANDARDS
FOR
CONSTRUCTION**

**TOWN OF MCCANDLESS
ALLEGHENY COUNTY, PA**

**Adopted by the Town of McCandless
July 24, 2006**

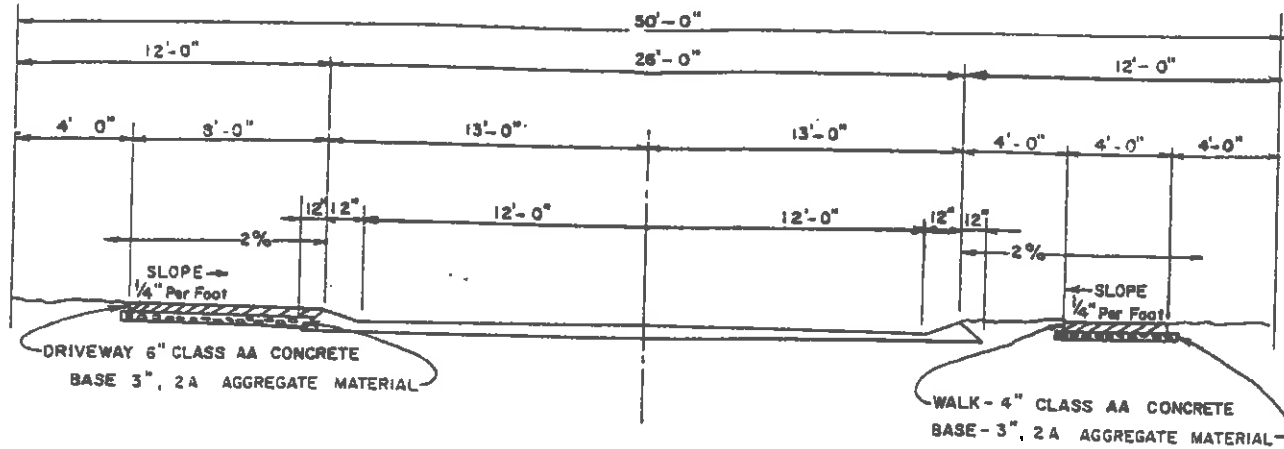
STANDARDS FOR CONSTRUCTION INDEX

- 100 SIDEWALK DETAIL — DRIVEWAY APPROACH APRON
- 101 DRIVEWAY STANDARD — FOR ALL DRIVEWAYS OTHER THAN
1 & 2 FAMILY RESIDENTIAL DWELLINGS
- 102 DRIVEWAY STANDARD — FOR ALL DRIVEWAYS OTHER THAN
1 & 2 FAMILY RESIDENTIAL DWELLINGS
- 103 DRIVEWAY APPROACH — (WITH SIDEWALK)

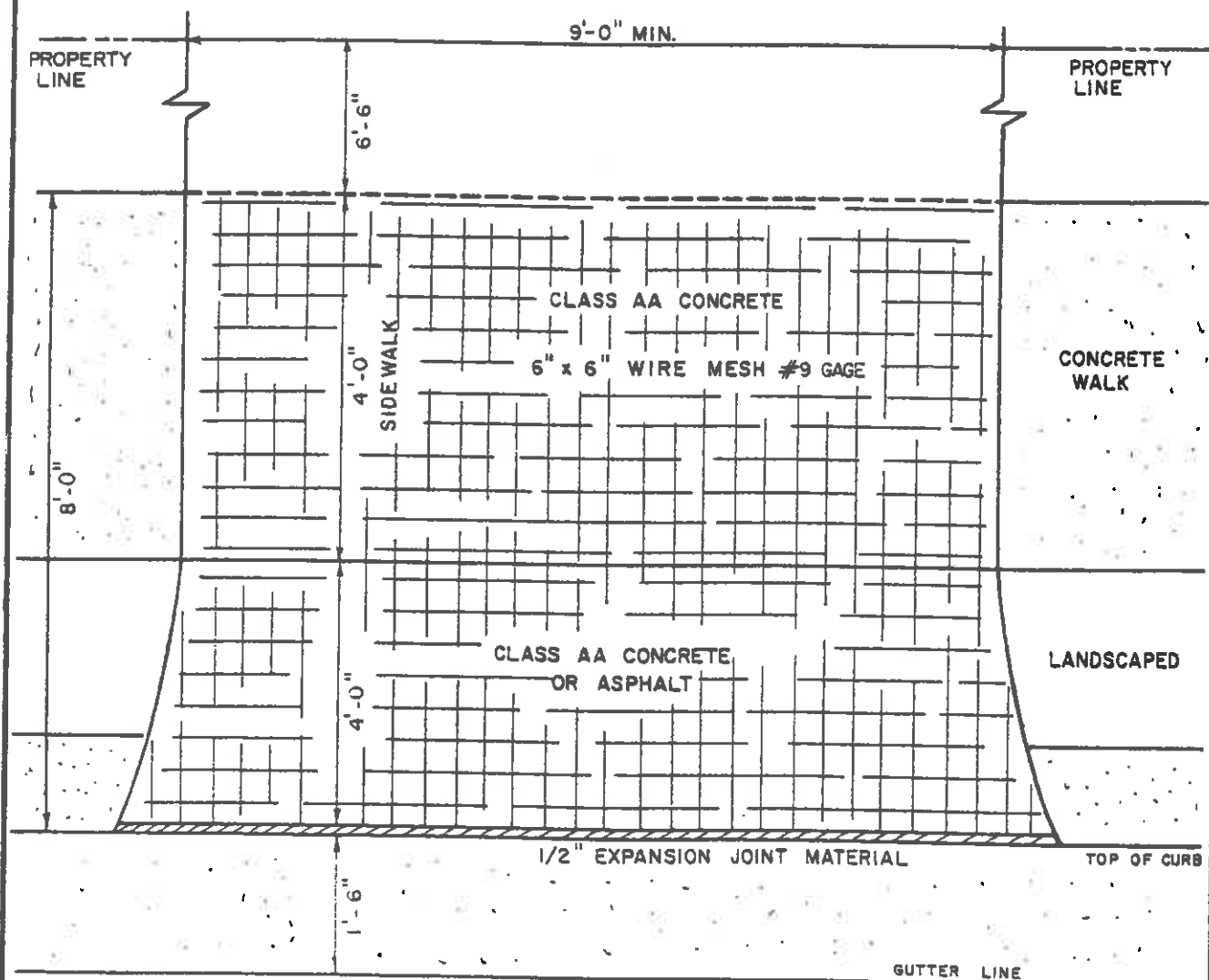
- 200 ROAD PAVING AND WIDENING — LOCAL, MINOR, OR
MARGINAL ACCESS
- 201 COLLECTOR ROAD SPECIFICATION
- 202 CONCRETE TRENCH REPAVING SPECIFICATION
- 203 BITUMINOUS TRENCH REPAVING SPECIFICATION

- 600 CONCRETE ENCASEMENT — CONCRETE STORM ANCHORS
- 601 PIPE TRENCHING AND BEDDING DETAIL
- 602 STORM DRAINAGE STRUCTURES
- 603 STORM DRAINAGE STRUCTURES
- 604 ENERGY DISSIPATION TRENCH
- 605 PRECAST CONCRETE MANHOLE DETAIL FOR PIPES UNDER
48" IN DIAMETER
- 606 FLARED CONCRETE END SECTION
- 607 FLARED CORRUGATED PLASTIC PIPE END SECTION —
(ADS OR APPROVED EQUAL)

- 700 STREET LAYOUT STANDARD
- 701 INTERSECTION PLAN
- 702 VERTICAL CURVES AT INTERSECTIONS — VERTICAL
CURVES AT GRADE CHANGES
- 703 TYPICAL PUBLIC UTILITY LOCATIONS



SIDEWALK DETAIL



DRIVEWAY APPROACH APRON

REVISIONS:

MARCH, 1991
JAN., 1992
SEPTEMBER, 1999

SIDEWALK DETAIL
DRIVEWAY APPROACH APRON

TOWN OF McCANDLESS STANDARDS FOR CONSTRUCTION
ALLEGHENY COUNTY, PA. SHEET 1 OF 2

SHEET 1 OF 2

100

Begin driveway at
the edge of
pavement

PAVEMENT

SHOULDER

Min. - 2 %
8' Min.

Up Grade

8 % Max.

Down Grade

8 % Max.

10' Min.

3.5 %

3.5 %

3.5 %

3.5 %

WITHOUT CURB

Begin driveway at
the edge of curb

PAVEMENT

Max. + 2 %
8' Min.

Up Grade

8 % MAX.

Down Grade

8 % MAX.

10' Min.

3.5 %

3.5 %

3.5 %

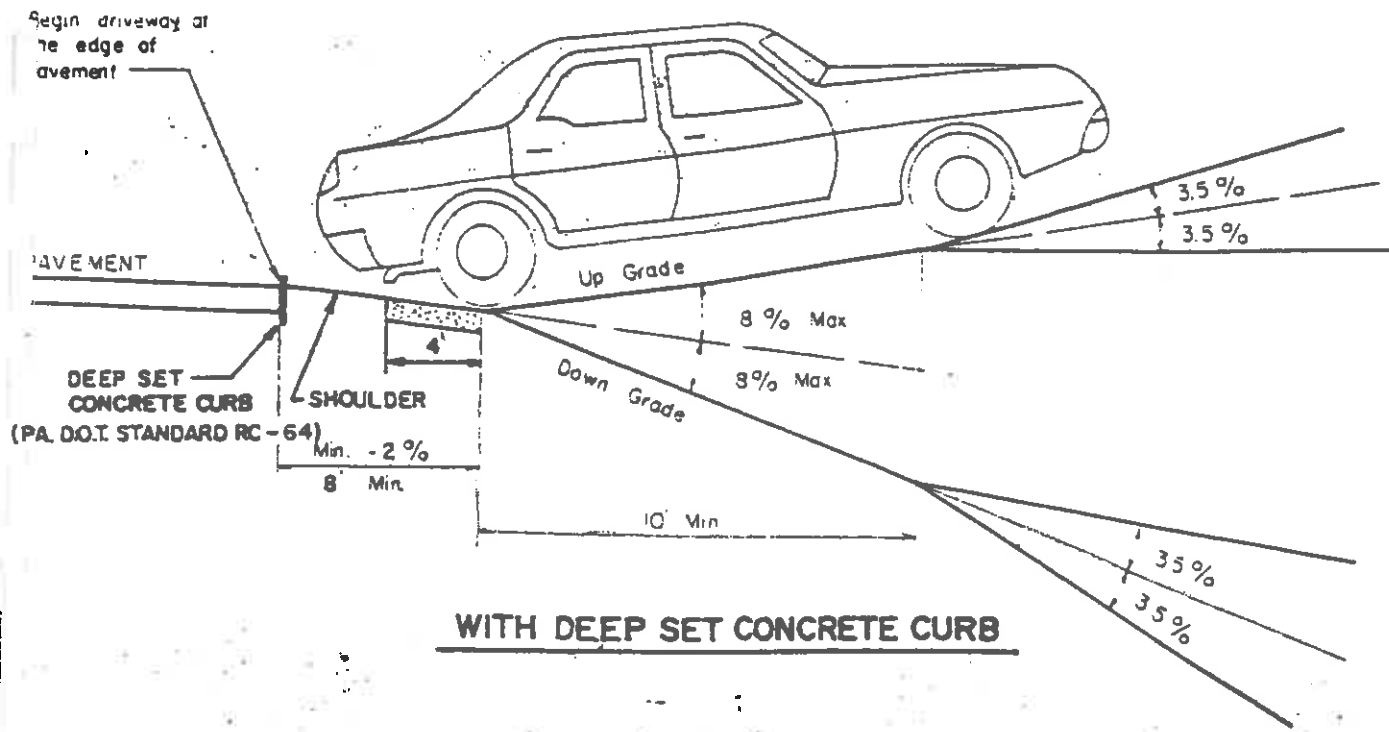
3.5 %

WITH BITUMINOUS WEDGE CURB

REVISIONS:
SEPTEMBER, 1999

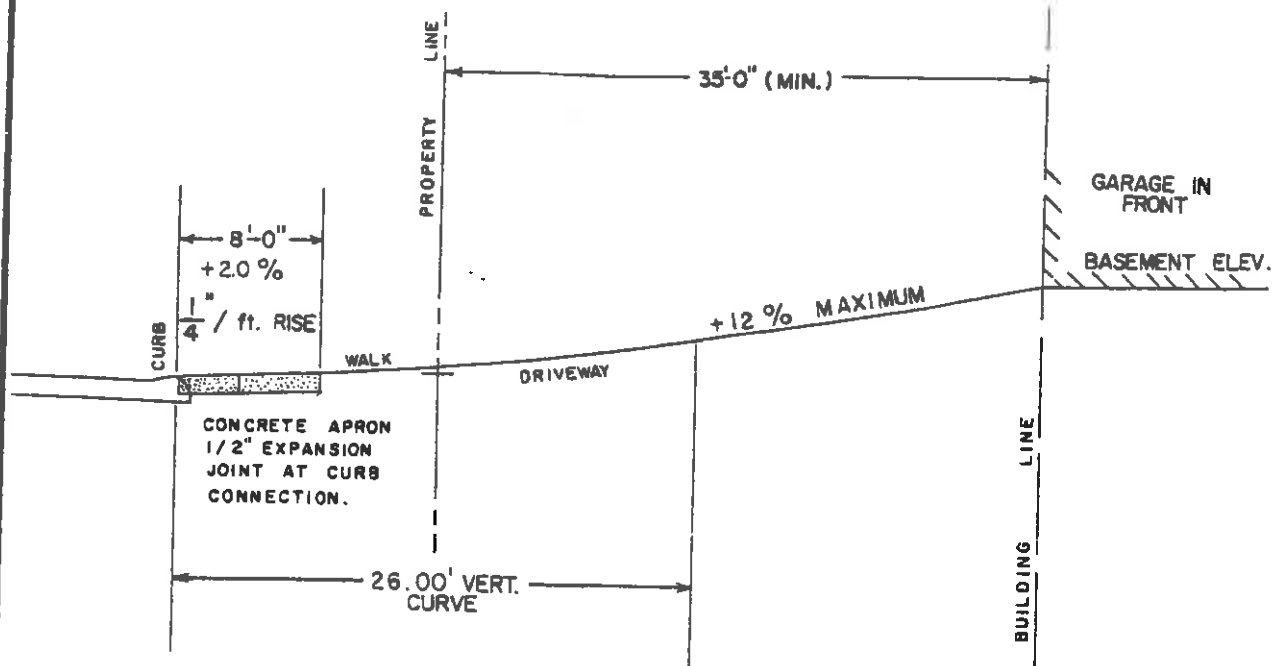
DRIVEWAY STANDARD
FOR ALL DRIVEWAYS OTHER THAN 1 & 2 FAMILY RESIDENTIAL DWELLINGS
TOWN OF McCANDLESS STANDARDS FOR CONSTRUCTION
ALLEGHENY COUNTY, PA.

101

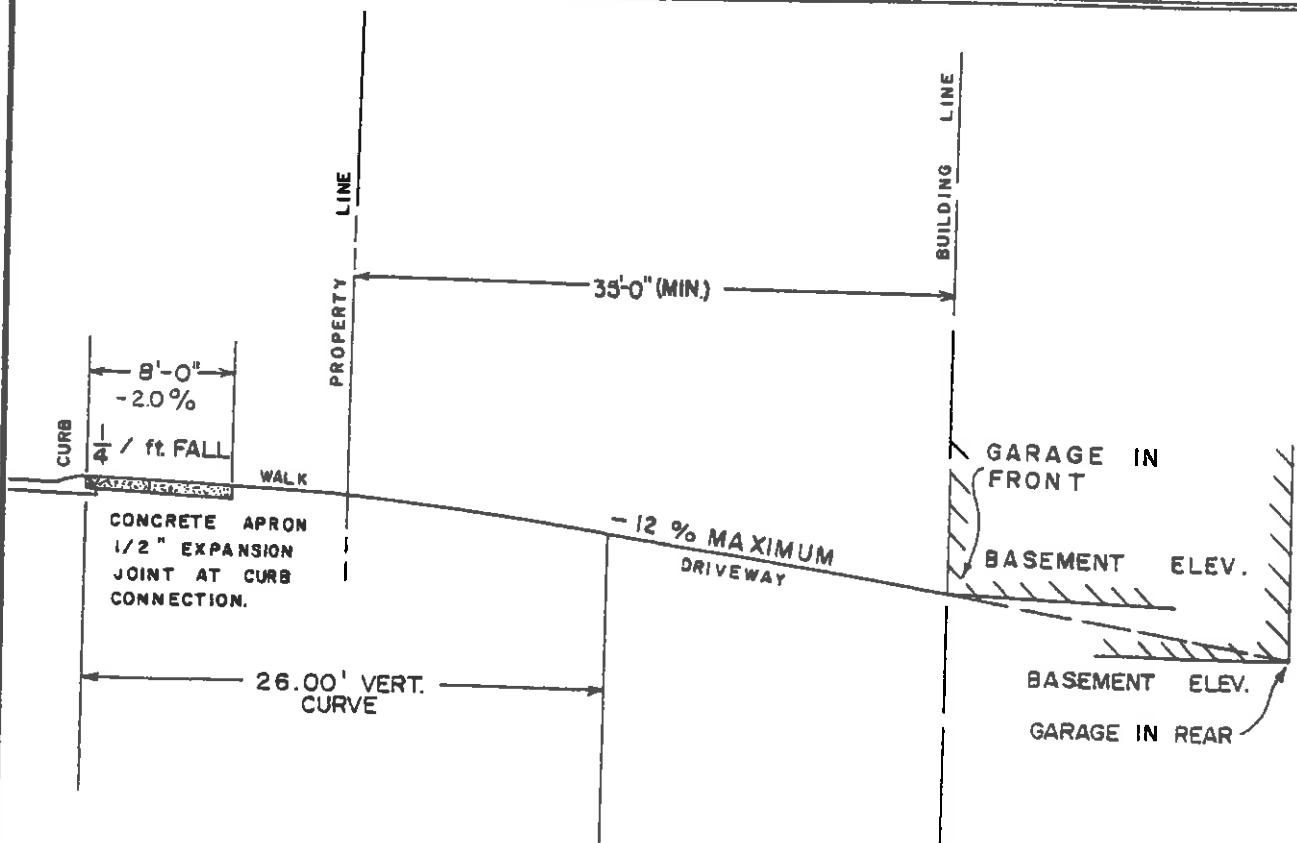


REVISIONS:
SEPTEMBER, 1999

DRIVEWAY STANDARD
FOR ALL DRIVEWAYS OTHER THAN 1 & 2 FAMILY RESIDENTIAL DWELLING
TOWN OF McCANDLESS STANDARDS FOR CONSTRUCTION
ALLEGHENY COUNTY, PA.



TYPICAL DRIVEWAY APPROACH
HIGH SIDE LOTS

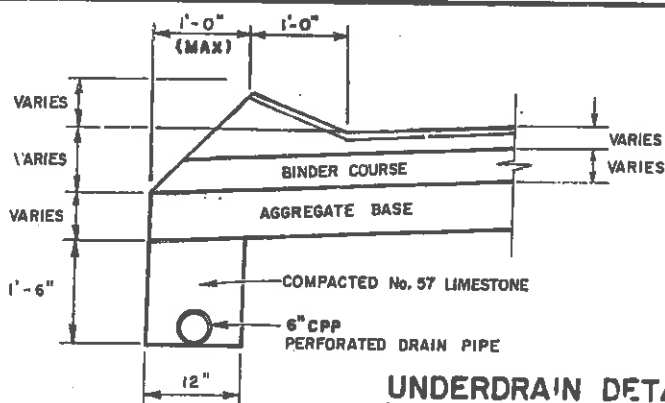
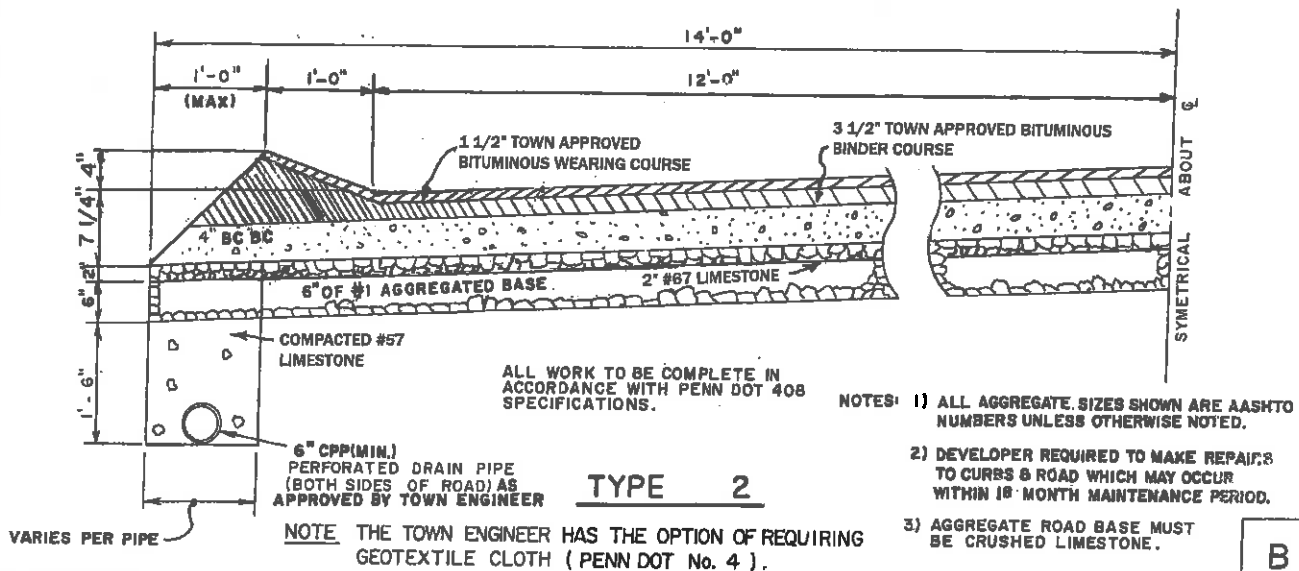
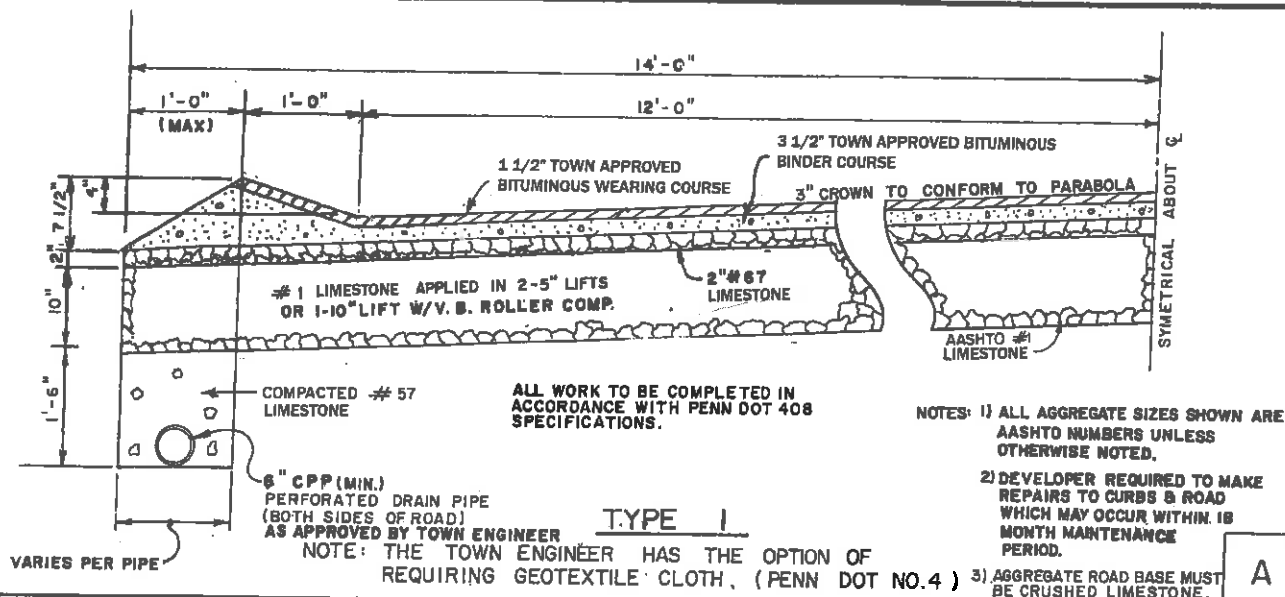


TYPICAL DRIVEWAY APPROACH
LOW SIDE LOTS
1 & 2 FAMILY RESIDENTIAL

REVISIONS:
SEPTEMBER, 1999

DRIVEWAY APPROACH
(With Sidewalk)

TOWN OF McCANDLESS STANDARDS FOR CONSTRUCTION
ALLEGHENY COUNTY, PA.



REVISIONS:

MARCH, 1991. JULY 2006
 APRIL, 1991
 JULY, 1991
 JAN., 1992
 SEPTEMBER, 1999
 JANUARY, 2005

ROAD PAVING AND WIDENING LOCAL, MINOR, OR MARGINAL ACCESS

TOWN OF McCANDLESS STANDARDS FOR CONSTRUCTION
 ALLEGHENY COUNTY, PA

FOR THE PURPOSES OF CONSTRUCTION, A COLLECTOR ROAD SHALL BE DEFINED AS A ROADWAY MEETING ANY ONE OR A COMBINATION OF THE FOLLOWING CRITERIA:

- 1) ANY ROAD EXPECTED TO CARRY MORE THAN 750 VEHICLES PER DAY.
- 2) ANY ROAD EXPECTED TO SERVICE A COMMERCIAL, MULTI-FAMILY, AND/OR INSTITUTIONAL LOT.
- 3) ANY ROAD EXPECTED TO SERVICE A "D" DEVELOPMENT DISTRICT.

ALL COLLECTOR ROADS SHALL BE DESIGNED ON ANTICIPATED VOLUME. ALL ROADWAY SECTIONS SHALL BE DESIGNED IN ACCORDANCE WITH PENNSYLVANIA D.O.T. PUBLICATION 242 AND SUBMITTED TO THE TOWN FOR REVIEW.

THE MINIMUM WIDTH OF A COLLECTOR ROAD SHALL BE THIRTY (30) FEET.

REVISIONS:
SEPTEMBER 1999

COLLECTOR ROAD SPECIFICATION

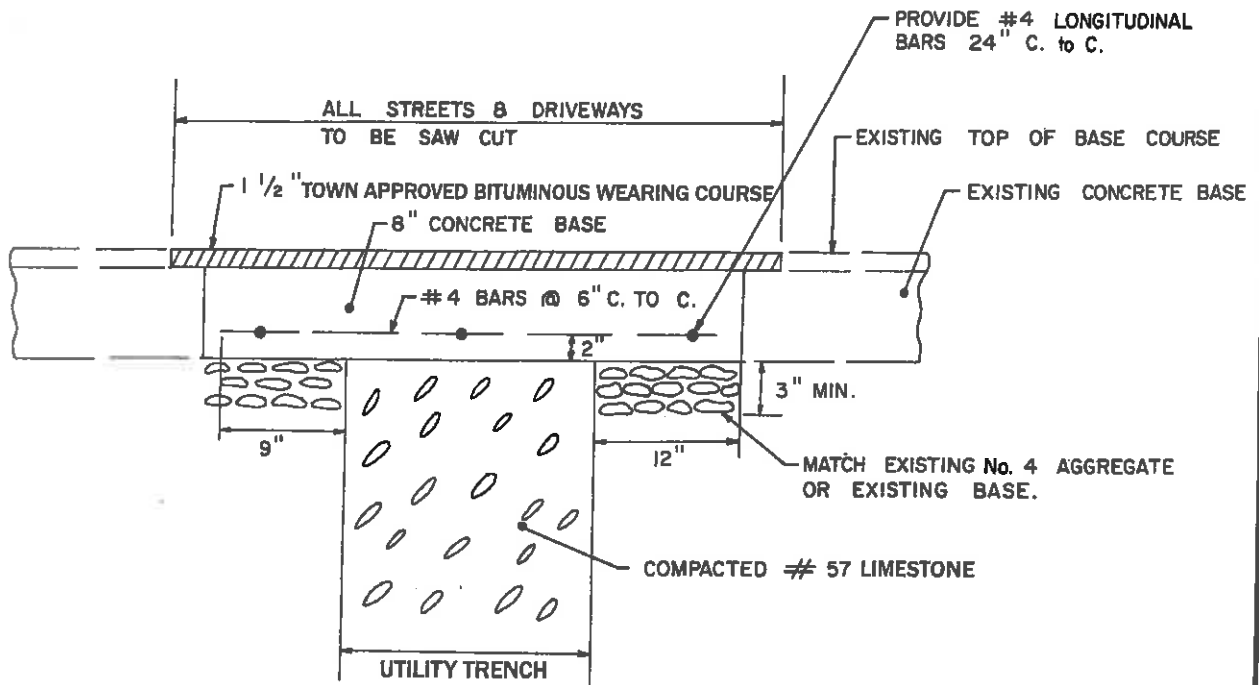
TOWN OF McCANDLESS
ALLEGHENY COUNTY, PA

STANDARDS FOR
CONSTRUCTION

201

COUNTY AND STATE SPECIFICATIONS
SHALL SUPERCEDE THIS DETAIL IN
THEIR PAVEMENTS.

USE HIGH EARLY STRENGTH CONCRETE.



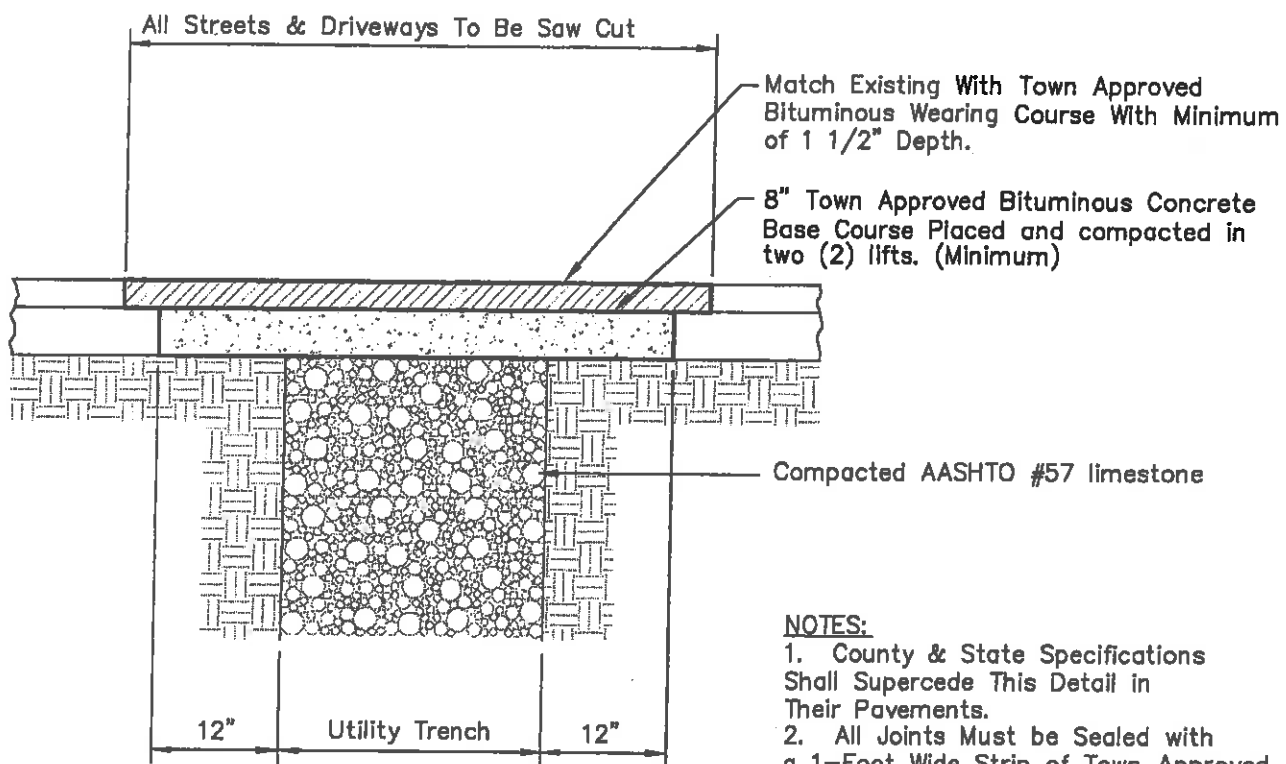
NOTE: ALL JOINTS MUST BE SEALED WITH A
1 FOOT WIDE STRIP OF TOWN APPROVED
BITUMINOUS MATERIAL.

REVISIONS :

MARCH , 1991
JULY , 1991
JAN. , 1992
SEPTEMBER, 1999
JULY 2006

CONCRETE TRENCH
REPAVING SPECIFICATION

TOWN OF McCANDLESS STANDARDS FOR CONSTRUCTION
ALLEGHENY COUNTY, PA.



NOTES:

1. County & State Specifications Shall Supercede This Detail in Their Pavements.
2. All Joints Must be Sealed with a 1-Foot Wide Strip of Town Approved Bituminous Material.

REVISIONS:

DECEMBER 1999
JULY, 2006

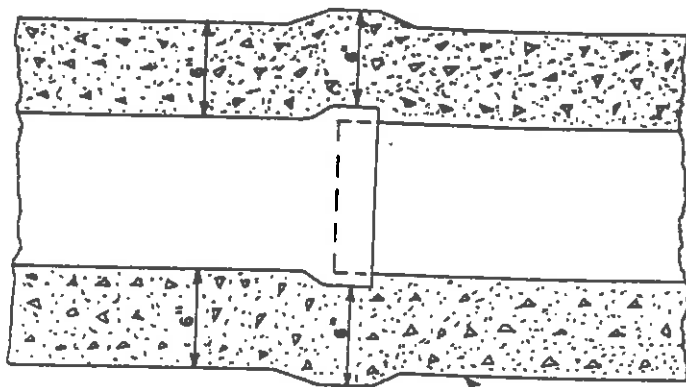
BITUMINOUS TRENCH REPAVING SPECIFICATION

TOWN OF McCANDLESS
ALLEGHENY COUNTY, PA

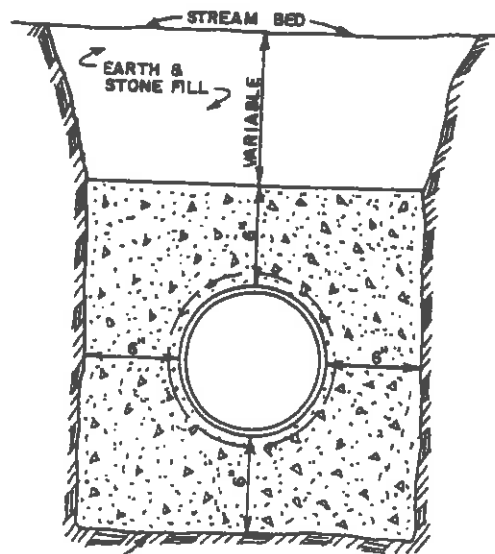
STANDARDS FOR
CONSTRUCTION

203

CONCRETE ENCASEMENT



— PLAN OR ELEVATION —

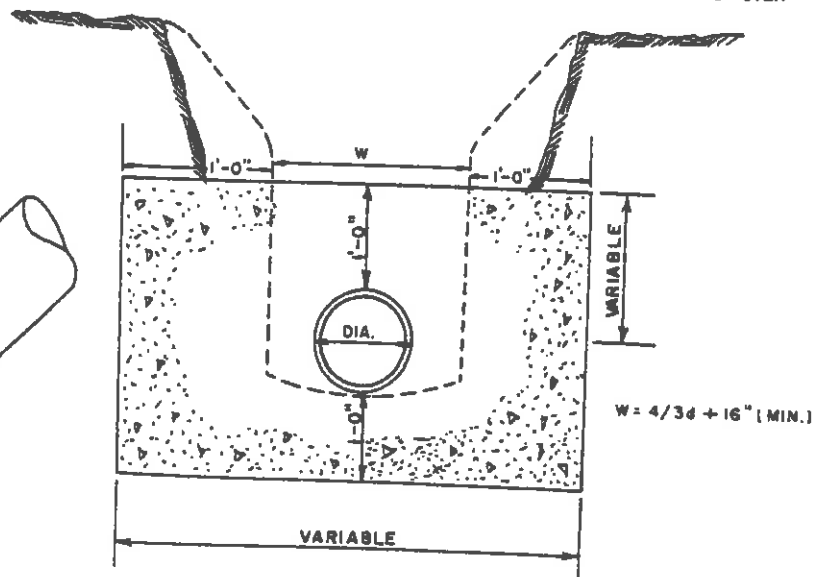
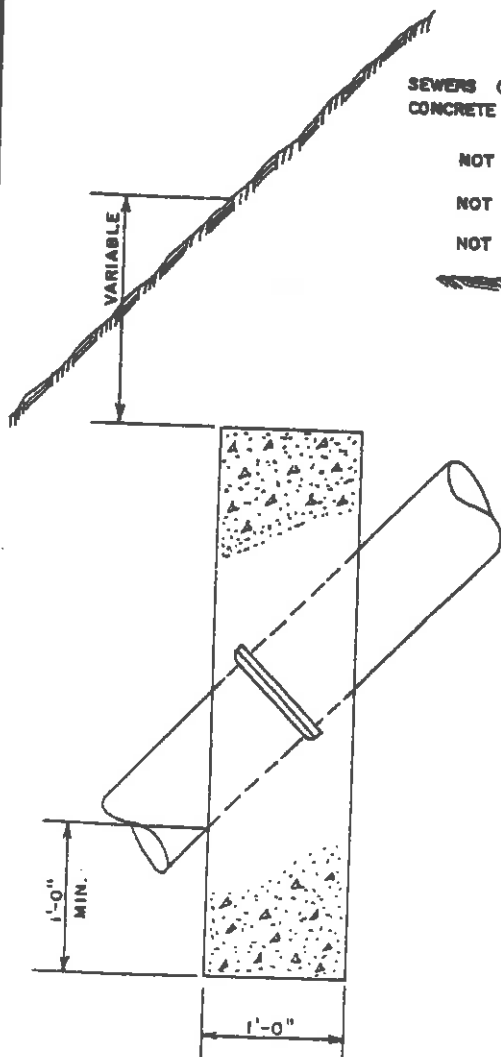


— SECTION —

A

SEWERS ON 20% SLOPE OR GREATER SHALL BE ANCHORED WITH CONCRETE ANCHORS OR EQUAL, SPACED AS FOLLOWS:

- NOT OVER 36 FEET CENTER TO CENTER ON GRADES 20% AND UP TO 36%
- NOT OVER 24 FEET CENTER TO CENTER ON GRADES 35% AND UP TO 50%
- NOT OVER 16 FEET CENTER TO CENTER ON GRADES 50% AND OVER



CONCRETE
STORM ANCHORS
(OVER 19%)

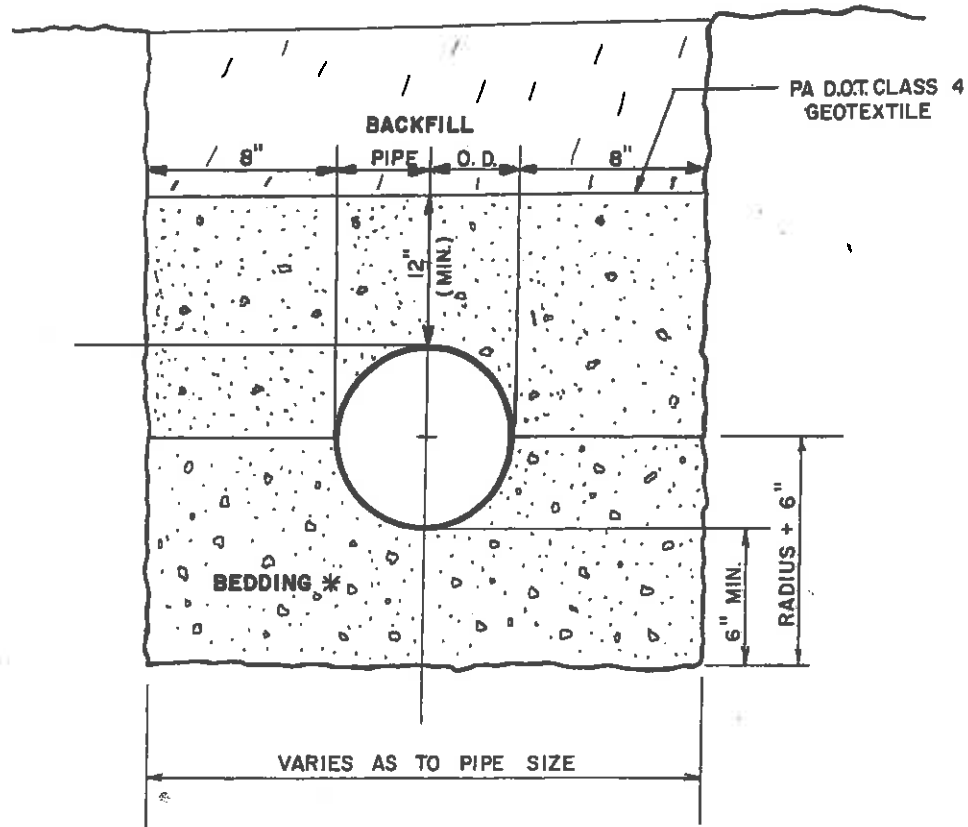
B

REVISIONS:

MARCH, 1991

CONCRETE ENCASEMENT
CONCRETE STORM ANCHORS

TOWN OF McCANDLESS STANDARDS FOR CONSTRUCTION
ALLEGHENY COUNTY, PA.



BEDDING: THE BEDDING SHALL HAVE A MINIMUM DEPTH OF (6) SIX INCHES BELOW ALL PIPE AND SHALL BE BACKFILLED WITH AASHTO #57 LESTONE ((12) TWELVE INCHES BELOW ALL PIPE IN ROCK) THEN EXTENDED UP THE HAUNCHES TO (12) TWELVE INCHES ABOVE PIPE.

BACKFILL: ALL STREET AND PARKING AREA CROSSING SHALL BE BACKFILLED TO SUBGRADE WITH AASHTO #57 LESTONE.

IN ALL OTHER TRENCH AREAS BACKFILL FROM THE SPRINGLINE TO (1) ONE FOOT ABOVE THE TOP OF PIPE ; TO BE SELECTED MATERIAL (SELECTED MATERIAL IS FINELY DIVIDED MATERIAL FREE OF DEBRIS, ORGANIC MATERIAL AND STONES) , TAMPED IN (4) FOUR INCH LAYERS; THEN THE REMAINING BACKFILL FROM THE TRENCH MAY BE PLACED.

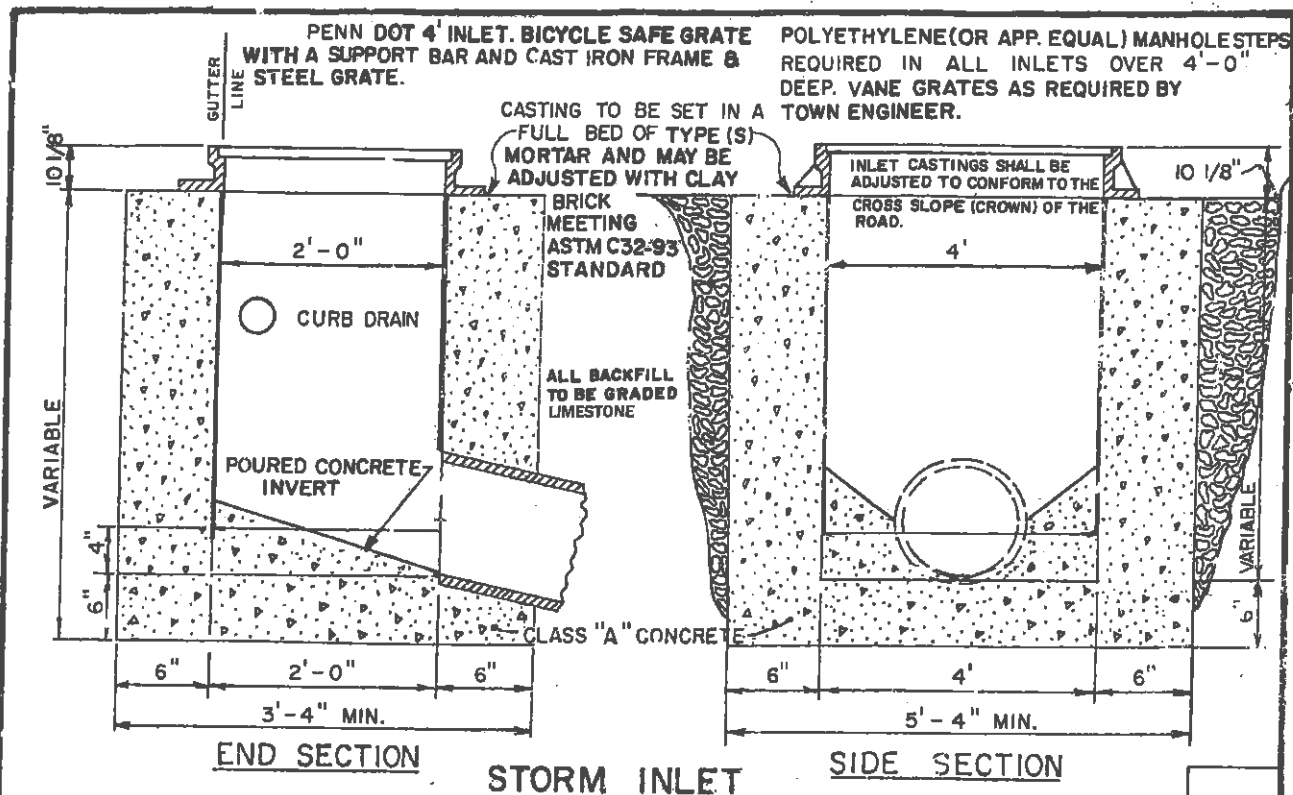
NOTE: THIS STANDARD APPLIES TO ALL AUTHORIZED PIPE USED IN THE TOWN.

REVISIONS :
JAN. 1990
JAN. 1992
SEPTEMBER, 1999
JULY 2006

PIPE TRENCHING AND BEDDING DETAIL

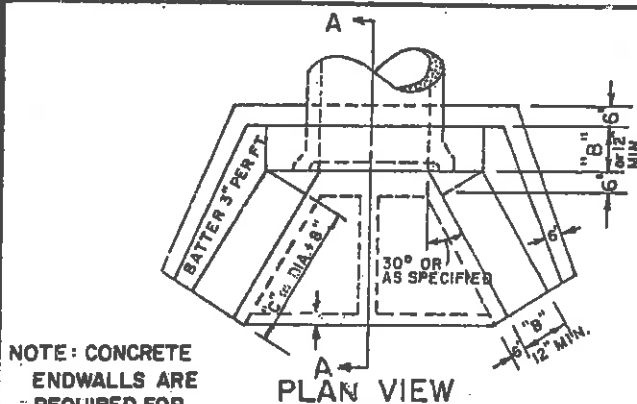
TOWN OF McCANDLESS STANDARDS FOR CONSTRUCTION
ALLEGHENY COUNTY, PA.

601

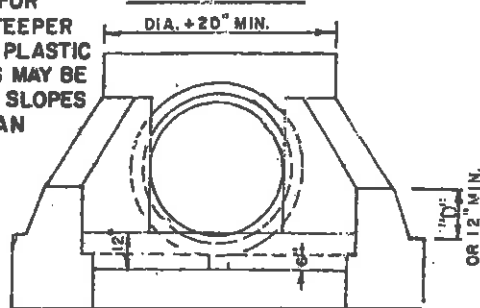


NOTE: PRECAST INLETS WILL BE APPROVED WITH FACTORY INSTALLED PIPE OPENINGS AS LONG AS THEY ARE ONE PIECE CONSTRUCTION. NO PIPE OPENINGS MAY BE CUT IN THE FIELD. STEPS SHALL BE MANUFACTURER INSTALLED. NO FIELD

A

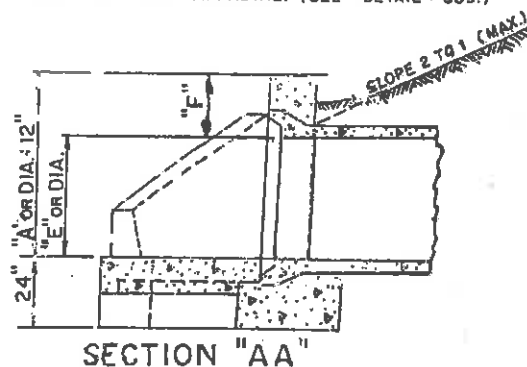


NOTE: CONCRETE ENDWALLS ARE REQUIRED FOR SLOPES STEEPER THAN 3:1. PLASTIC ENDWALLS MAY BE USED FOR SLOPES LESS THAN 3:1.



PIPE DIA.	A	B	C	D	E	F
42"	5'-3"	15"	4'-3"	18"	4'-0"	15"
48"	5'-9"	15"	4'-9"	21"	4'-0"	15"
54"	6'-3"	15"	5'-3"	24"	5'-0"	15"
60"	7'-0"	15"	5'-9"	2'-3"	5'-0"	18"
66"	7'-6"	15"	7'-0"	2'-6"	6'-0"	18"
72"	8'-0"	18"	7'-0"	2'-6"	6'-6"	18"
84"	9'-0"	18"	8'-3"	2'-9"	7'-6"	18"

NOTE: SHOP DRAWINGS FOR ALL PRECAST HEADWALLS / ENDWALLS OR CONCRETE END SECTION MUST BE SUBMITTED FOR APPROVAL. (SEE DETAIL 609.)



END WALL OR HEADWALL DETAILS

TYPICAL DETAILS

B

1978

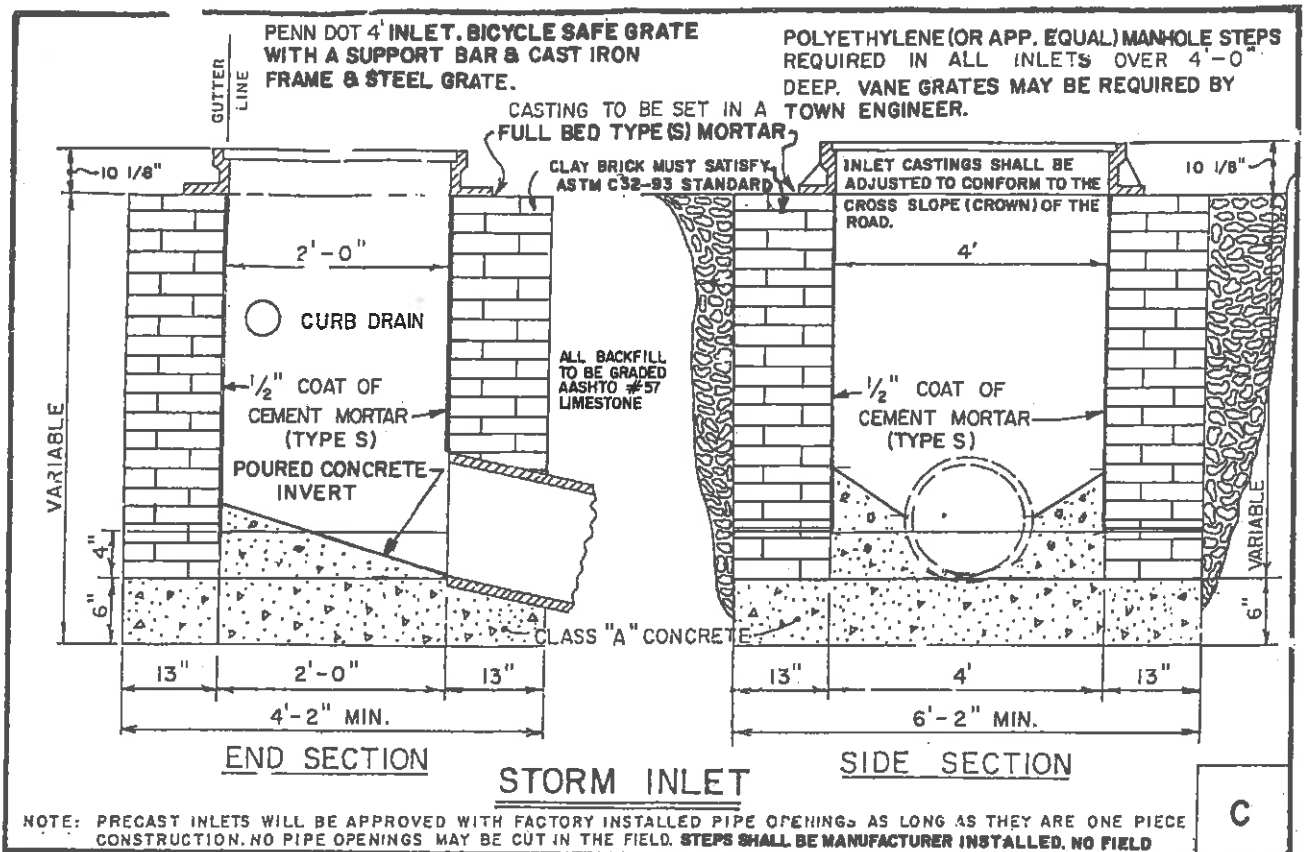
REVISIONS

MARCH, 1991
JULY, 1991
JAN., 1992
SEPTEMBER, 1999
JULY 2006

STORM DRAINAGE STRUCTURES

TOWN OF McCANDLESS STANDARDS FOR CONSTRUCTION
ALLEGHENY COUNTY, PA.

602



INSTALLATION

1991

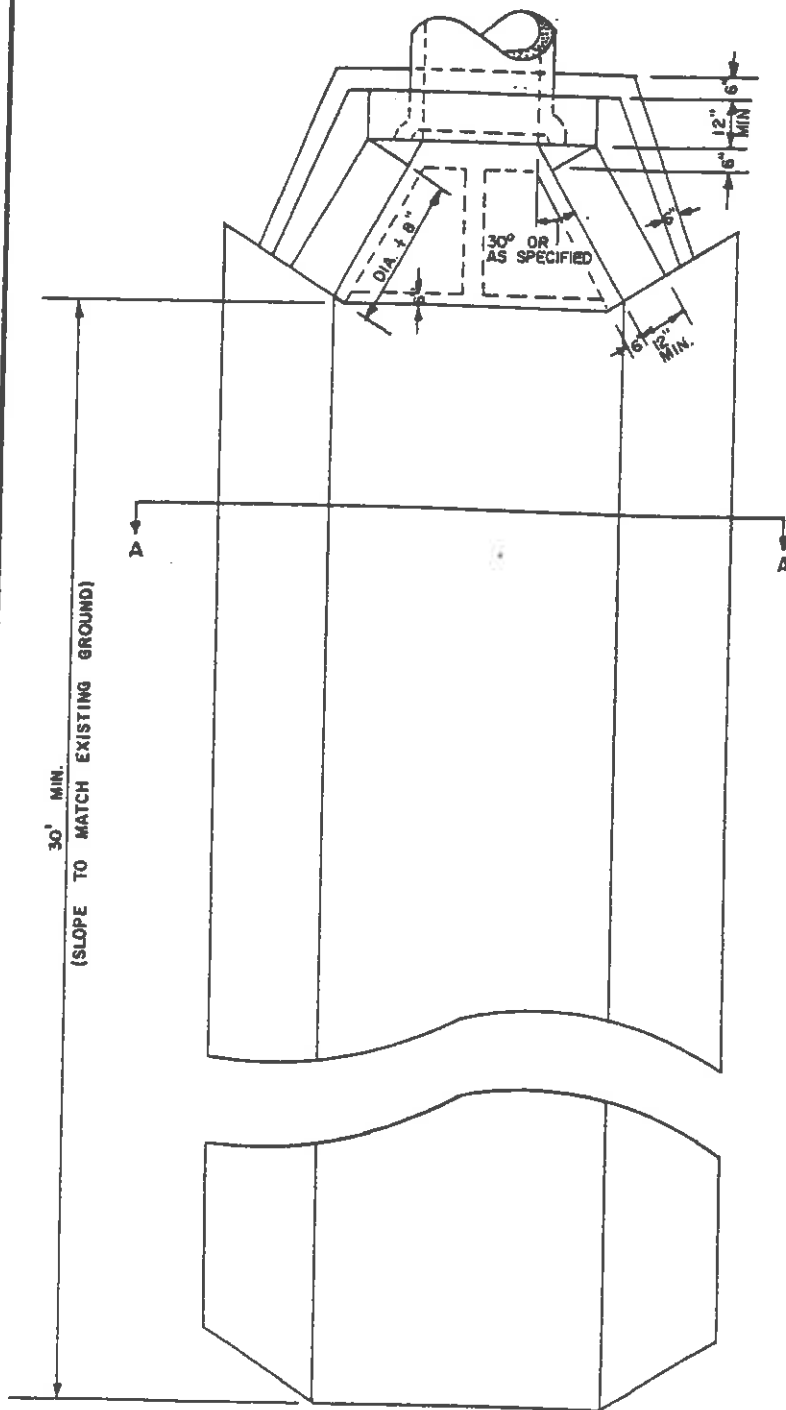
REVISIONS
JULY, 1991
JAN. , 1992
SEPTEMBER, 1999
JULY 2006

STORM DRAINAGE STRUCTURES

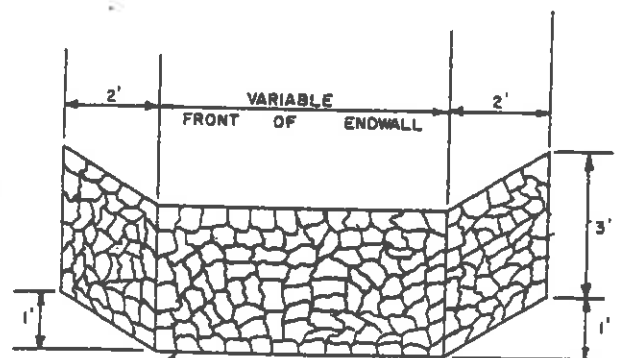
TOWN OF McCANDLESS STANDARDS FOR CONSTRUCTION
ALLEGHENY COUNTY, PA

SHEET 2 OF 2

603



PLAN VIEW



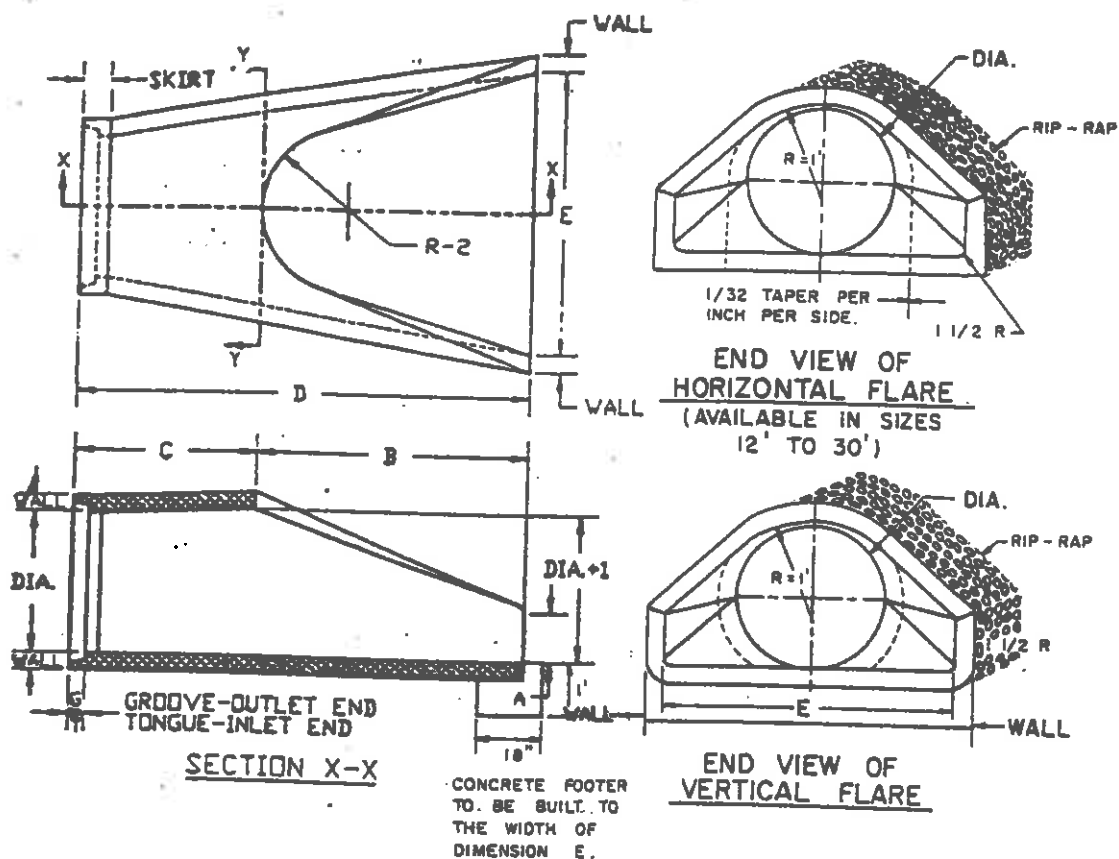
SECTION "AA"

AGGREGATE SIZE DETERMINED BY THE
OUTFLOW VELOCITY OF THE DESIGN
FLOW.

REVISIONS:
MARCH, 1991
SEPTEMBER, 1993

ENERGY DISSIPATION TRENCH

TOWN OF McCANDLESS STANDARDS FOR CONSTRUCTION
ALLEGHENY COUNTY, PA.



NOTE: SHOP DRAWINGS FOR ALL OTHER SIZES NOT SPECIFIED MUST BE SUBMITTED FOR APPROVAL.

RIP RAP IS REQUIRED IN FRONT OF THE END SECTION AT A MINIMUM WIDTH OF "E" + THE SIDE SLOPE OF THE OUTFALL CHANNEL. A MINIMUM LENGTH OF 20 FEET IS REQUIRED FOR THE CHANNEL. RIP RAP IS REQUIRED COMPLETELY BEHIND THE STRUCTURE AS SHOWN

AVAILABLE SIZES

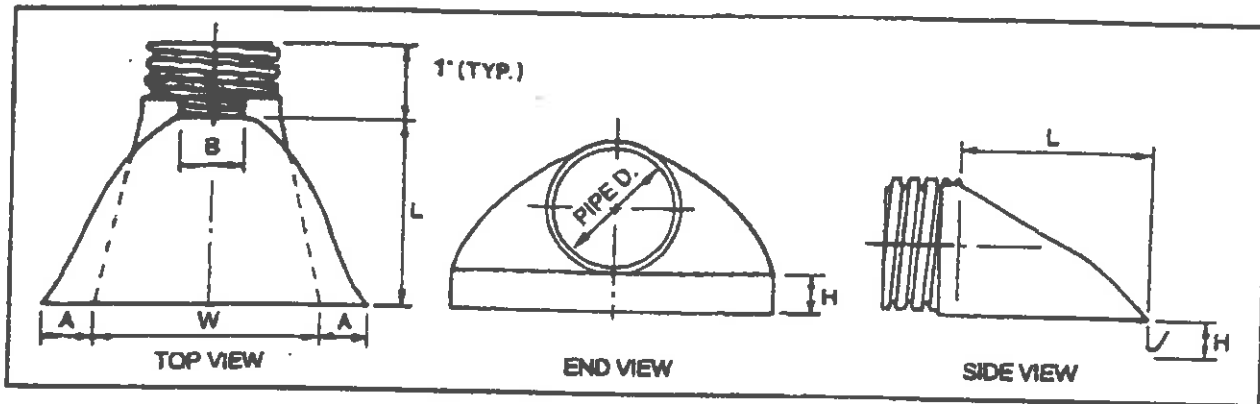
DIA.	WALL	G or T	WT. SEC	A	B	C	D	E	DIA.+1	R-1	R-2	SKIRT
12	2	1 1/2	530	4	24	48 7/8	72 7/8	24	13	10 1/16	9	3 1/2
15	2 1/4	2	740	6	27	46	73	30	16	12 1/2	11	3 1/2
18	2 1/2	2 1/2	990	9	27	46	73	36	19	15 1/2	12	4
21	2 3/4	2 1/4	1,280	9	35	38	73	42	22	16 1/8	13	4
24	3	2 1/2	1,520	9 1/2	43 1/2	30	73 1/2	48	25	16 11/16	14	4 1/2
27	3 1/4	2 1/2	1,930	10 1/2	48	25 1/2	73 1/2	54	28	17 3/4	14 1/2	4 1/2
30	3 1/2	3	2,190	12	54	19 3/4	73 3/4	60	31	18 5/16	15	5
36	4	13 1/2	4,100	15	63	34 3/4	97 3/4	72	37	24 1/16	20	5 1/2
42	4 1/2	3 3/4	5,380	21	63	35	98	78	43	27 1/4	22	5 1/2
48	5	4 1/4	6,550	24	72	26	98	84	49	28 1/8	22	5 3/4

REVISIONS

MARCH, 1991
JULY, 1991
JAN., 1992

FLARED CONCRETE END SECTION

TOWN OF McCANDLESS STANDARDS FOR CONSTRUCTION
ALLEGHENY COUNTY, PA.



NOTE: SHOP DRAWINGS FOR ALL OTHER SIZES NOT SPECIFIED MUST BE SUBMITTED FOR APPROVAL

RIP RAP IS REQUIRED IN FRONT OF THE END SECTION AT A MINIMUM WIDTH OF "W" + THE SIDE SLOPE OF THE OUTFALL CHANNEL. A MINIMUM LENGTH OF 20 FEET IS REQUIRED FOR THE CHANNEL. RIP RAP IS REQUIRED COMPLETELY BEHIND THE STRUCTURE AS SHOWN

AVAILABLE SIZES

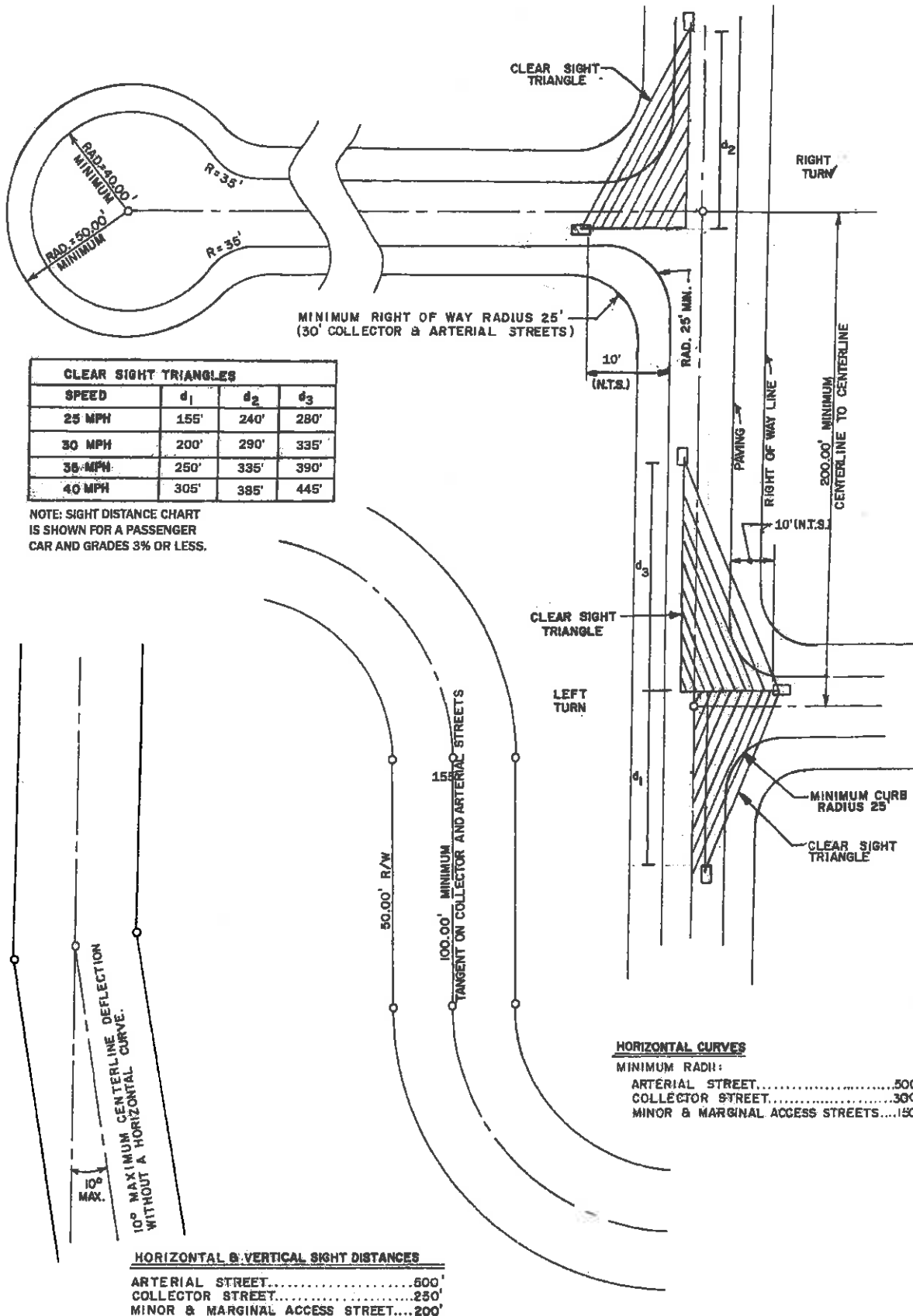
PIPE DIAMETER	DIMENSIONS, INCHES				
	A, ± 1	B MAX	H, ± 1	L ± 1/2 (13)	W, ± 2
12, 15	6.5	10	6.5	25	29
18	7.5	15	6.5	32	35
24	7.5	18	6.5	36	45
30	10.5	N/A	7.0	53	68
36	10.5	N/A	7.0	53	68

REVISIONS
SEPTEMBER, 1999

FLARED CORRUGATED PLASTIC PIPE END SECTION (ADS OR APPROVED EQUAL)

TOWN OF McCANDLESS STANDARDS FOR CONSTRUCTION
ALLEGHENY COUNTY, PA.

607



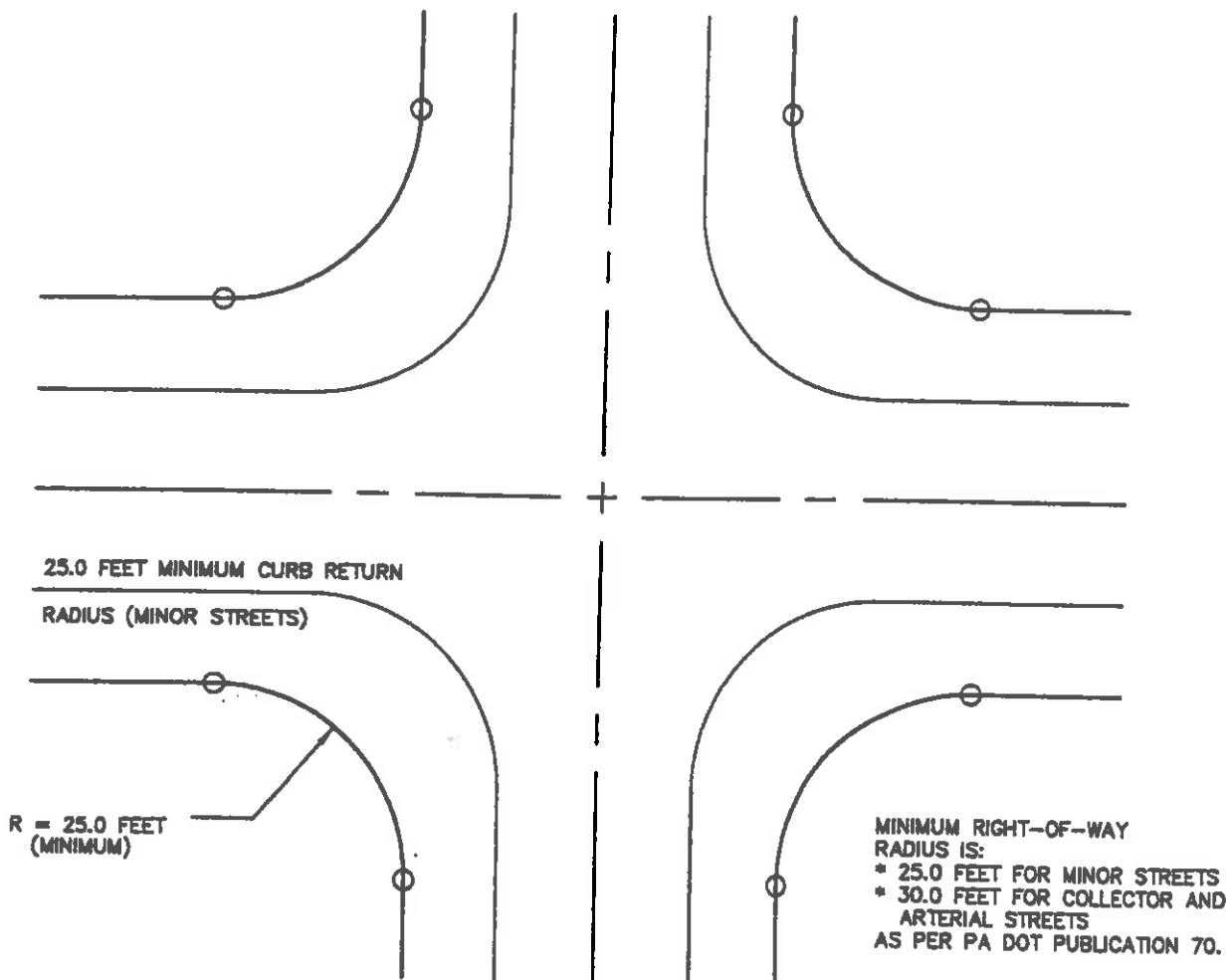
REVISIONS:

SEPTEMBER, 1999
JULY, 2006

STREET LAYOUT STANDARD

TOWN OF McCANDLESS STANDARDS FOR CONSTRUCTION
ALLEGHENY COUNTY, PA

700



NOTE:
ALL INTERSECTIONS TO BE 90°

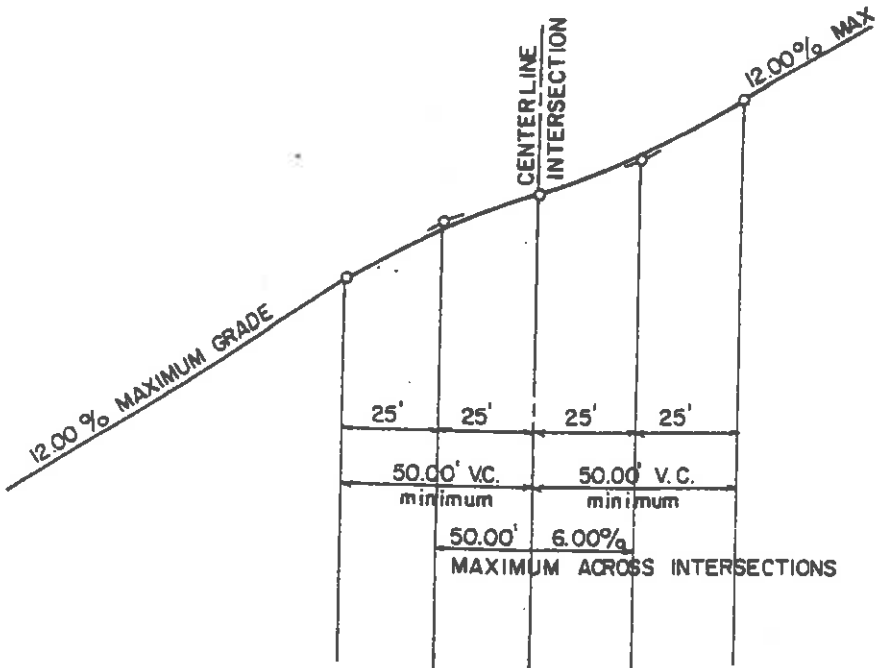
REVISIONS:
SEPTEMBER 1999

INTERSECTION PLAN

TOWN OF McCANDLESS
ALLEGHENY COUNTY, PA

STANDARDS FOR
CONSTRUCTION

701



VERTICAL CURVES AT INTERSECTIONS

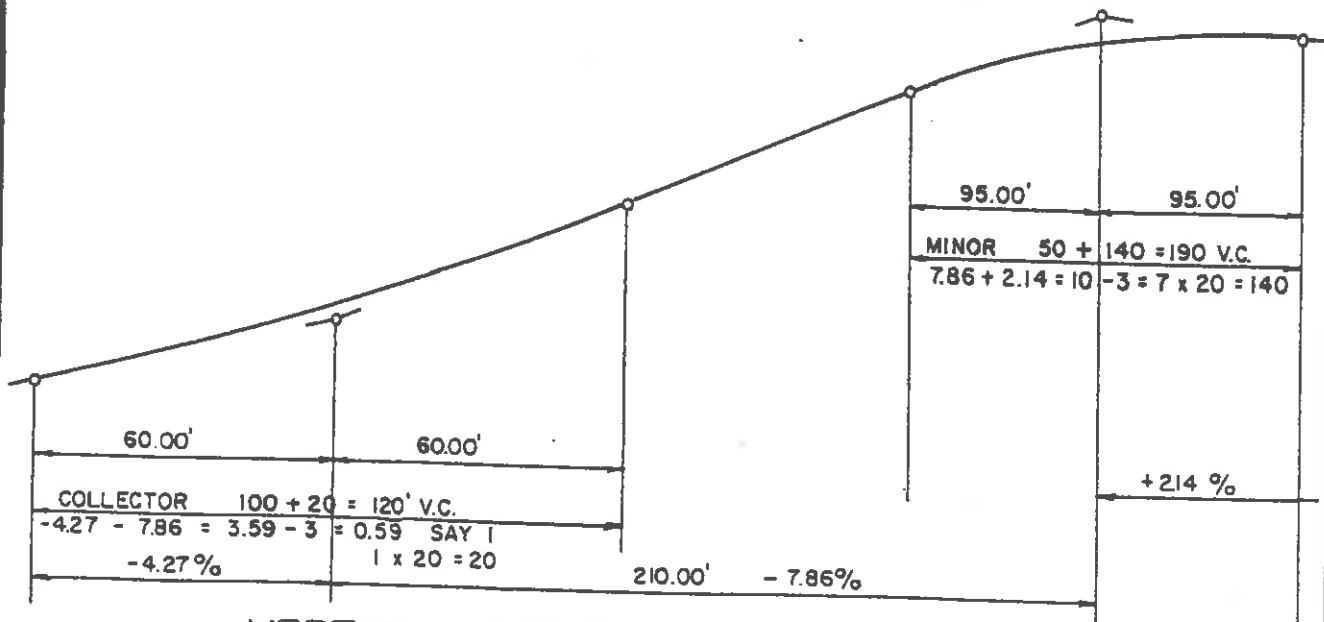
NOTE: VERTICAL CURVES SHALL BE INCREASED 20 FEET FOR EACH 1% OF GRADE CHANGE EXCEEDING 3%.

GRADES ACROSS INTERSECTIONS SHALL NOT EXCEED 6% WITHIN 25' OF THE CENTERLINE INTERSECTION.

150.00' MINIMUM ARTERIAL STREETS

100.00' MINIMUM COLLECTOR STREETS

50.00' MINIMUM MINOR OR MARGINAL ACCESS STREETS



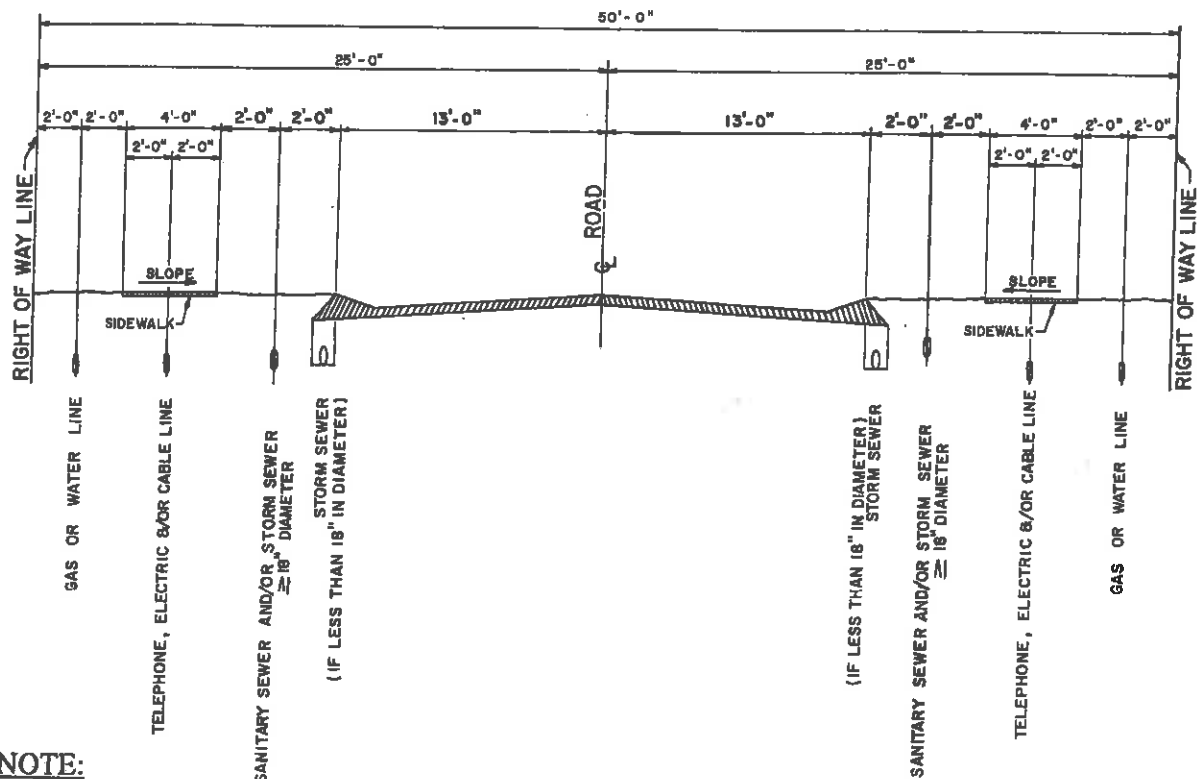
VERTICAL CURVES AT GRADE CHANGES

REVISIONS:
SEPTEMBER, 1989

VERTICAL CURVES AT INTERSECTIONS
VERTICAL CURVES AT GRADE CHANGES

TOWN OF McCANDLESS STANDARDS FOR CONSTRUCTION
ALLEGHENY COUNTY, PA

702



NOTE:

A MANHOLE OR INLET MUST BE INSTALLED AT ALL HORIZONTAL OR VERTICAL CHANGES IN A STORM SEWER LINE. ALL PRIVATE CONNECTIONS INTO A STORM SEWER LINE MUST BE MADE WITH A MANUFACTURED WYE.

ALL UTILITIES CROSSING THE ROADWAY SHALL BE AT LEAST 3' DEEP, BACKFILLED WITH AASHTO NO. 57 LIMESTONE AND SHALL BE INSPECTED BY THE TOWN. UTILITY CROSSINGS SHALL ALSO CONFORM TO THE MINIMUM STANDARDS FOR EACH RESPECTIVE UTILITY COMPANY.

THE MINIMUM DEPTH OF ALL UTILITY LINES IS FROM THE FINISHED CENTERLINE GRADE.

UPON COMPLETION OF CONSTRUCTION AN AS BUILT PLAN MUST BE SUBMITTED SHOWING ALL INSTALLED UTILITIES.

UTILITY SITUATION MAY VARY, BUT DIMENSIONS WILL GOVERN.

ALL TELEPHONE, ELECTRIC, TECHNOLOGY, AND CABLE T.V. LINES MUST BE INSTALLED IN CASING AT ROAD CROSSINGS.

STORM AND SANITARY SEWER CONSTRUCTION MUST BE COMPLETED FIRST.

REVISIONS
 MARCH, 1991 JULY 2006
 JULY, 1991
 APRIL, 1992
 MAY, 1992
 SEPTEMBER, 1999

TYPICAL PUBLIC UTILITY LOCATIONS

**TOWN OF McCANDLESS STANDARDS FOR CONSTRUCTION
 ALLEGHENY COUNTY, PA.**

703